



University of Tennessee's User-eXperience Lab (UXL)

Rachel Volentine, UXL Manager
College of Communications and Information
University of Tennessee

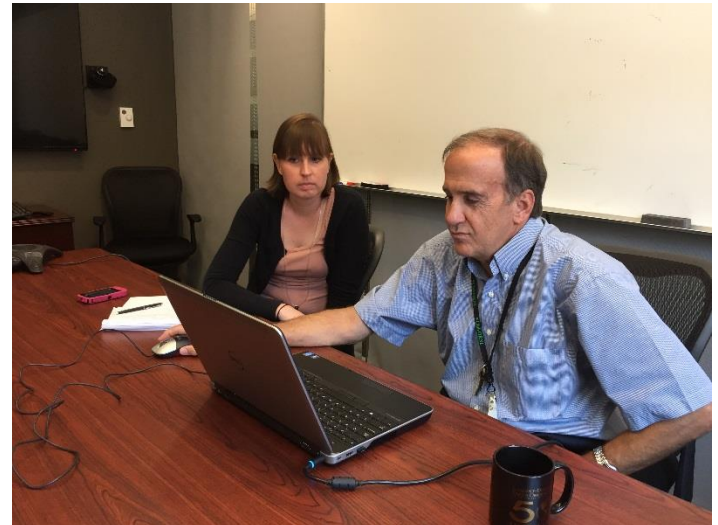
ESIP Usability Cluster
February 7, 2018

About the Lab

- Founded in 2008
- Collaboration between UT and ORNL
- 612 square feet
- University of Tennessee, College of Communications and Information.
- Capabilities for remote, portable, and in-lab UX testing
- Open to UT faculty, students, organizations, and outside entities



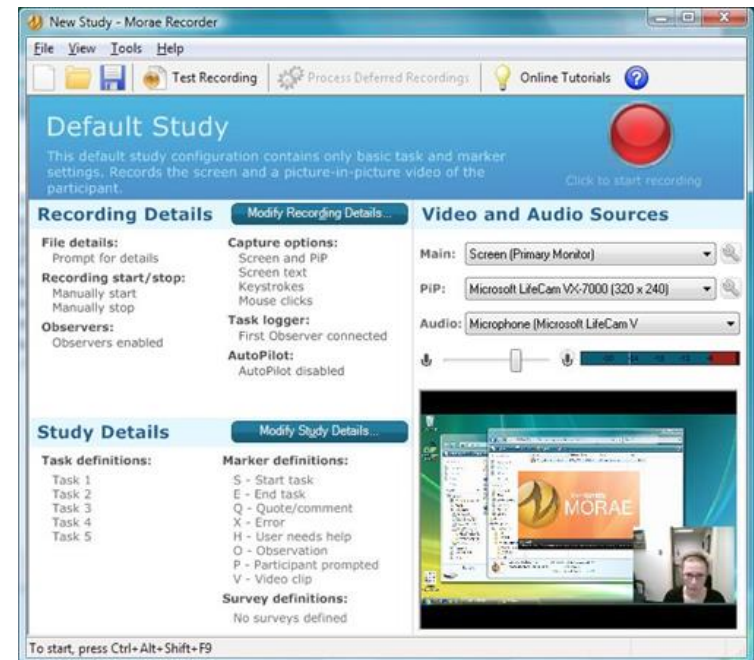
Usability study in the lab



Usability study at ORNL

Morae Software

- Morae Recorder
 - Audio
 - Video
 - On-screen activity
 - Keyboard/mouse input
 - Preset study templates
- Morae Observer
 - Watch the experience
 - Make notes



Loop11—Remote UX Software

- Create usability test with tasks and questions.
- User opens URL to take test.
- Results analyzed in Loop11.
- Monthly or yearly subscription.

Step 2: Tasks & Questions

Create Task

Task name:

handbook

Give this task a brief name so you can quickly distinguish between tasks later.

Task scenario:

Find the Student Handbook.

Specific instructions for the participant to read, telling them what goal they are trying to achieve.

[More information @](#)

Start URL:

<http://gradschool.utk.edu/>



The URL is valid

The URL of the page where you want the participant to commence this task.

Success URL(s)

<http://gradschool.utk.edu/graduate-stud>



The URL is valid

[X Remove](#)

The URL you want participants to navigate to to complete this task.

<http://hilltopics.utk.edu/student-code-of-c>



The URL is valid

[X Remove](#)

[+ Add another success URL](#)

Cancel

Create Task

Tasks

[View another task](#) ▼

2. Park City Utah: "Using Google, Bing, or whatever what is the elevation of Park City, Utah? Once you have found the information press "End Task""

[Next task](#) →

■ Success 100%
■ Fail 0%
■ Abandon 0%



Total participants - 6

[Session Videos](#) [Participant path analysis](#) [Clickstream & heatmaps](#)

Page views to complete task

Average	2.0
Maximum	2
Minimum	2

Time to complete task (secs)

Average	44.2
Maximum	153.0
Minimum	13.0

Most common success page

	Response %	Response count	
https://www.google.com/#q=elevation-of-park-city-utah	33.3%	2	View full list
https://www.google.com/#q=park-city-utah-elevation	33.3%	2	
https://www.google.com/#q=elevation-park-city-utah	16.7%	1	

[View full list](#)

Most common first clicks

	Response %	Response count	
https://www.google.com/#q=elevation-of-park-city-utah	33.3%	2	
https://www.google.com/#q=park-city-utah-elevation	33.3%	2	
https://www.google.com/#q=elevation-park-city-utah	16.7%	1	

[View full list](#)

Example Project—How do non-native English speakers use the DataONE website?

The screenshot displays the DataONE website interface. At the top, the DataONE logo is visible, along with a search bar and navigation links: About, News, Participate, Resources, Education, and Data. The main content area is titled "Data Management Planning" and features a green progress bar indicating 81% completion. A sidebar on the left lists various resources, including Tools, Materials, and Find it Fast. The main content area includes a section for "General Guidelines" and a "Discover" section. The "Discover" section contains a "What is DataONE?" subsection and a "2017 DataONE Summer Internship Program" subsection. The "2017 DataONE Summer Internship Program" subsection includes a photo of a person and a link to "2017 INTERNS".

DataONE
Data Observation Network for Earth

Home » Resources » Data Management Planning

Resources

Tools

- Investigator Toolkit
- Data Management Planning
- Software Tools Catalog

Materials

- Publications
- Best Practices
- Data Life Cycle
- Librarian Outreach Kit
- Developer Resources
- Research Notebooks

Find it Fast

- Search for Data
- Data Management Planning
- Best Practices
- Software Tools
- Calendar
- Ask DataONE

Data Management Planning

*A goal without a plan is just a wish. **81% Complete** [exit survey](#)

Build your Data

The DMPTool is a c...
DMPTool will help y...

[Abandon Task](#) [Task Complete](#)

- Create ready-to-use data management plans
- Meet funder requirements for data management plans
- Get step-by-step instructions and guidance for your data management plan as you build it
- Learn about resources and services available at your institution to help fulfill the data management requirements of your grant

The DMPTool, originally released in October 2011, walks researchers through the steps necessary to create data management plan for one of several funders, including the NSF. You can save, preview and export your plan, and share them publicly. For more information go to the DMPTool.

General Guidelines

A data management plan describes the data that will be authored and how the data will be managed throughout its lifetime. The contents of the data management plan should include:

- the types of data to be authored;
- the standards that would be applied, for example format and metadata content;
- provisions for archiving and preservation;
- access policies and provisions; and

Discover

Find data from affiliated member repositories

Participate

Make the most of your data with supporting tools and services

Learn

Access materials and resources to support learning in good data management practices

What is DataONE?

DataONE is a community driven project providing access to data across multiple member repositories, supporting enhanced search and discovery of Earth and environmental data. DataONE promotes best practices in data management through responsive educational resources and materials. [Learn about DataONE](#)

2017 DataONE Summer Internship Program

The Data Observation Network for Earth (DataONE) is a virtual organization dedicated to providing open, persistent, robust, and secure access to biodiversity and environmental data, supported by the U.S. National Science Foundation. DataONE is pleased to announce the availability of summer research internships for undergraduates, graduate students and recent postgraduates.

SUMMER 2017

[2017 INTERNS](#)

Tweets about @dataoneorg

- Donica SchafferSmith (@donicaschaffersmith) Thanks @DataONEorg for the excellent primer on data management. Lots of useful reminder distance regression! Aug 16, 2017
- CommNatura1 (@CommNatura1) @DataONEorg RESASUComm Management Aug 16, 2017

Tips for remote UX

- Keep test short
- Make sure to have follow-up questions (open-ended, rating, scale, etc.)
- Time on Task doesn't mean as much
- Plan on iterative testing
- Can be incorporated with in-person testing



Practice Test:

https://www.dataone.org/?l11_uid=38598